



Deutsche Kinderkrebsstiftung
German Childhood Cancer Foundation
Adenauerallee 134, 53113 Bonn, Germany
www.kinderkrebsstiftung.de

Please pay registration fee (includes airport shuttle, meals, accommodation, and course materials) by bank transfer

to

Deutsche Kinderkrebsstiftung
Bank: Commerzbank AG Köln
Account: 0055566627, BLZ: 370 800 40
IBAN: DE95 3708 0040 0055 5666 27
Swiftcode (BIC): DRES DE FF 370
Concern: PostGrad Course, confirmation#

Deadlines:

Registration: before December 31th2011
Cancellations: before March 4th 2012

Local organizing committee:

Hermann Müller, Ursel Gebhardt
Klinikum Oldenburg
mueller.hermann@klinikum-oldenburg.de
kikra.doku@klinikum-oldenburg.de

Registration forms available at:

www.kinderkrebsstiftung.de

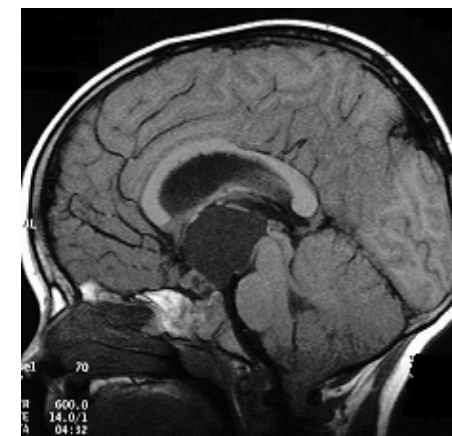
Please register via fax:

Fax : 0049-4414032789

Invited speakers:

- Alapetite, C.;** Institute Curie, Paris, France (Radiooncology)
Bartels, U.; Sick Kids, Toronto, Canada (Neurooncology)
Brämwig, J.; University Childrens Hospital, Münster, Germany (Endocrinology)
Erfurth, E.M.; Endokrin., Hudhuset, University Lund, Sweden (Endocrinology)
Flitsch, J.; Dep. of Neurosurgery, UKE, University Hamburg, Germany (Neurosurgery)
Garré, M.L.; Istituto Giannina Gaslini, Ospedale Pediatr. Genova, Italy (Neurooncology)
Kortmann, R.-D.; Dep. of Radiooncology University Leipzig, Germany (Radiooncology)
Mallucci, C.; Liverpool (Neurosurgery)
Merchant, T.; St. Jude, Memphis, USA (Radiooncology)
Nielsen, E.H.; Aarhus, Denmark (Epidemiology)
Nikkhah, G.; University Hospital, Freiburg, Germany (Stereotactic Neurosurgery)
Pietsch, T.; Dep. of Neuropathology, University Bonn, Germany (Neuropathology)
Puget, S.; Necker, Paris, France (Neurosurgery)
Rogol, A.; Virginia, USA (Endocrinology)
Simmons, I.; Leeds, UK (Ophthalmology)
Stokland, T.; University Hospital of North Norway, Tromsø, Norway (Neurooncology)
Warmuth-Metz, M.; Dep. of Neuroradiology, University Würzburg, Germany (Neuroradiology)
Weiss, R.; Hebrew University, Jerusalem, Israel (Endocrinology)
Wirbelauer, J.; Dep. of Pediatrics, University Würzburg, Germany (Pediatric Intensive Care)

2nd International Interdisciplinary Postgraduate Course on Childhood Craniopharyngioma



Preliminary program

April 19th to 22nd 2012

Seeschlößchen Dreiebergen
Bad Zwischenahn, Germany



April 19th 2012

Thursday

19:00 **Get-together** at Seeschlößchen

April 20th 2012

Friday

9:00 Welcome

9:05 **Pathology**

Pietsch, T., Bonn, Germany

9:30 **Epidemiology**

Nielsen, E.H., Aarhus, Denmark

10:00 **Neuroradiology**

Warmuth-Metz, M., Würzburg, Germany

10:30 Coffee break

11:00 **Ophthalmology**

Simmons, I., Leeds, UK

11:30 **Endocrinology I**

Brämwig, J., Münster, Germany

12:00 Lunch at Seeschlößchen

13:30 **Endocrinology II**

Müller, H.L., Oldenburg, Germany

Erfurth, E.M., Lund, Sweden

Weiss, R., Jerusalem, Israel

15:00 Coffee break

15:30 **Workshops I & II**

(I: ophthalmology – Simmons, Leeds, UK

II: endocrinology – Brämwig I., Münster)

20:00 Dinnertalk at Fährkroog

April 21st 2012

Saturday

8:00 Breakfast

9:00 **Neurosurgery I**

Mallucci, C., Liverpool, UK

Puget, S., Paris, France

Flitsch, J., Hamburg, Germany

10:30 Coffee break

11:00 **Neurosurgery II – endoscopy**

N.N.

11:30 **Neurosurgery III – stereotactic**

Nikkhah, G., Freiburg, Germany

12:00 Lunch at Seeschlößchen

13:30 **Intracystic therapy**

Bartels, U., Toronto, Canada

14:00 **Radiooncology**

Kortmann, R.-D., Leipzig, Germany

Merchant, T., Memphis, USA

Alapetite, C., Paris, France

15:30 Coffee break

16:00 **The Scandinavian experience**

Stokland, T., Tromsø, Norway

16:15 **The American experience**

Rogol, A., Virginia, USA

16:30 **Workshop III**

(III: pediatric intensive care - clinical cases

Wirbelauer J., Würzburg, Germany)

20:00 Dinnertalk at Klosterhof Aue

April 22nd 2012

Sunday

8:00 Breakfast

9:00 **Multidisciplinary strategies**

Garré, M.L., Genova, Italy

10:00 **Where are we going for ?**

Garré, M.L., Bartels, U., Mallucci, C.,

Alapetite C., Müller H.L.

11:00 **Feedback**

11:30 Snack and farewell

12:30 Shuttle transport to Bremen Airport



Venue

Hotel Seeschlößchen Dreierbergen

Dreierberger Straße 21-23

26160 Bad Zwischenahn, Germany

Tel: 0049-44039870 Fax: 0049-4403987155

info@seeschloesschen-dreierbergen.de

www.seeschloesschen-dreierbergen.de

45 min. driving distance from Bremen Airport